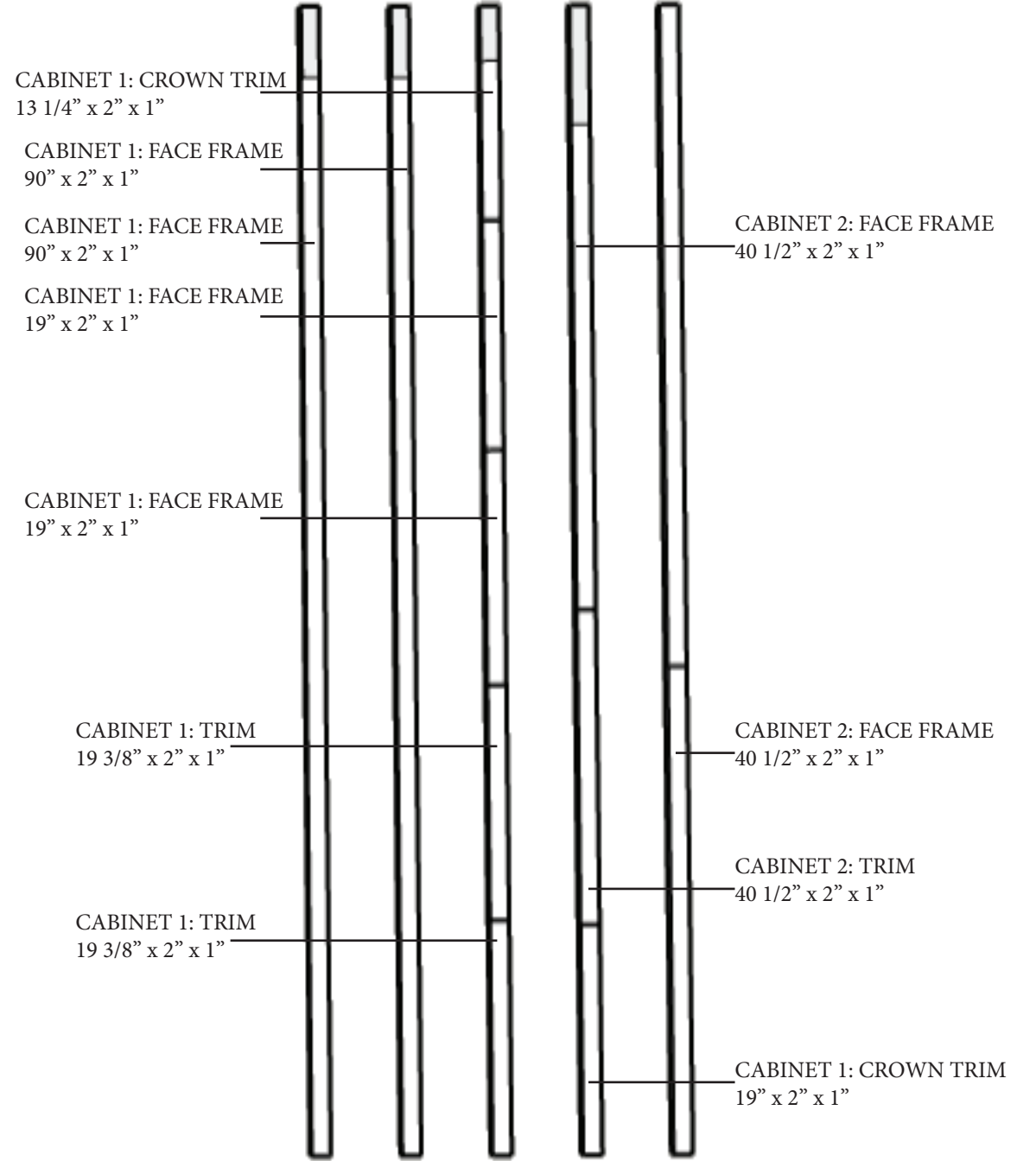
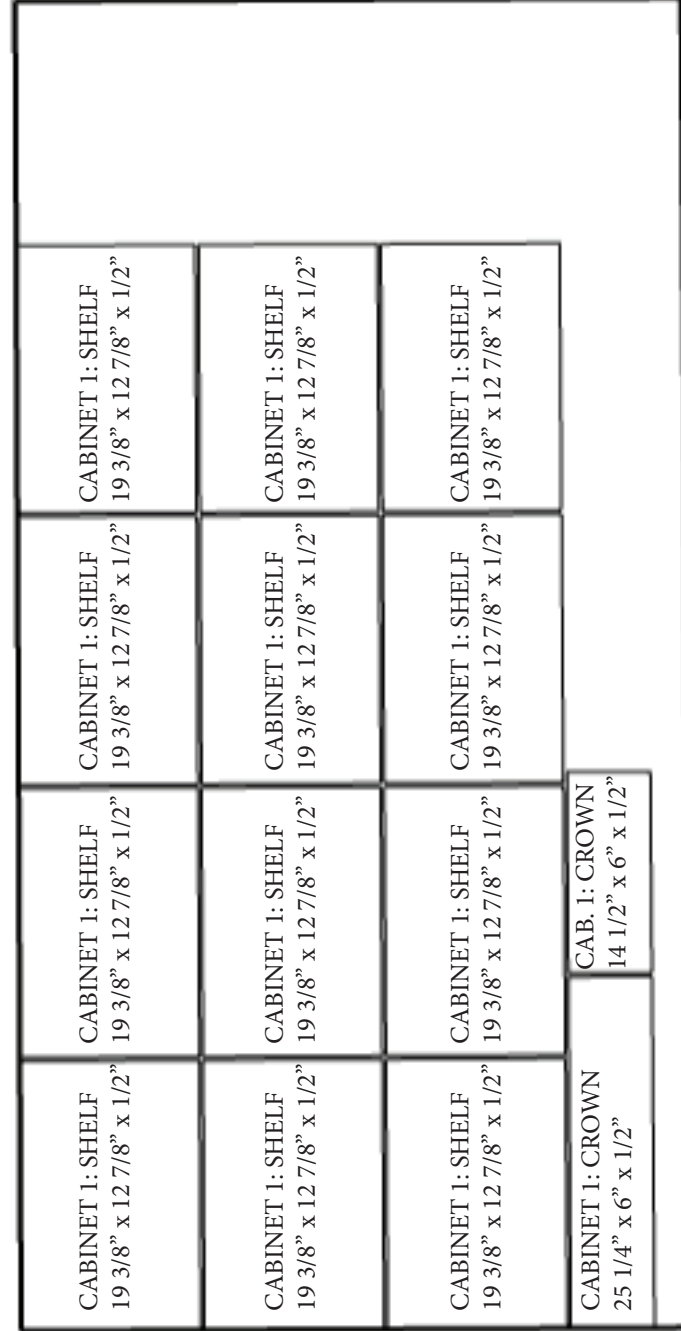
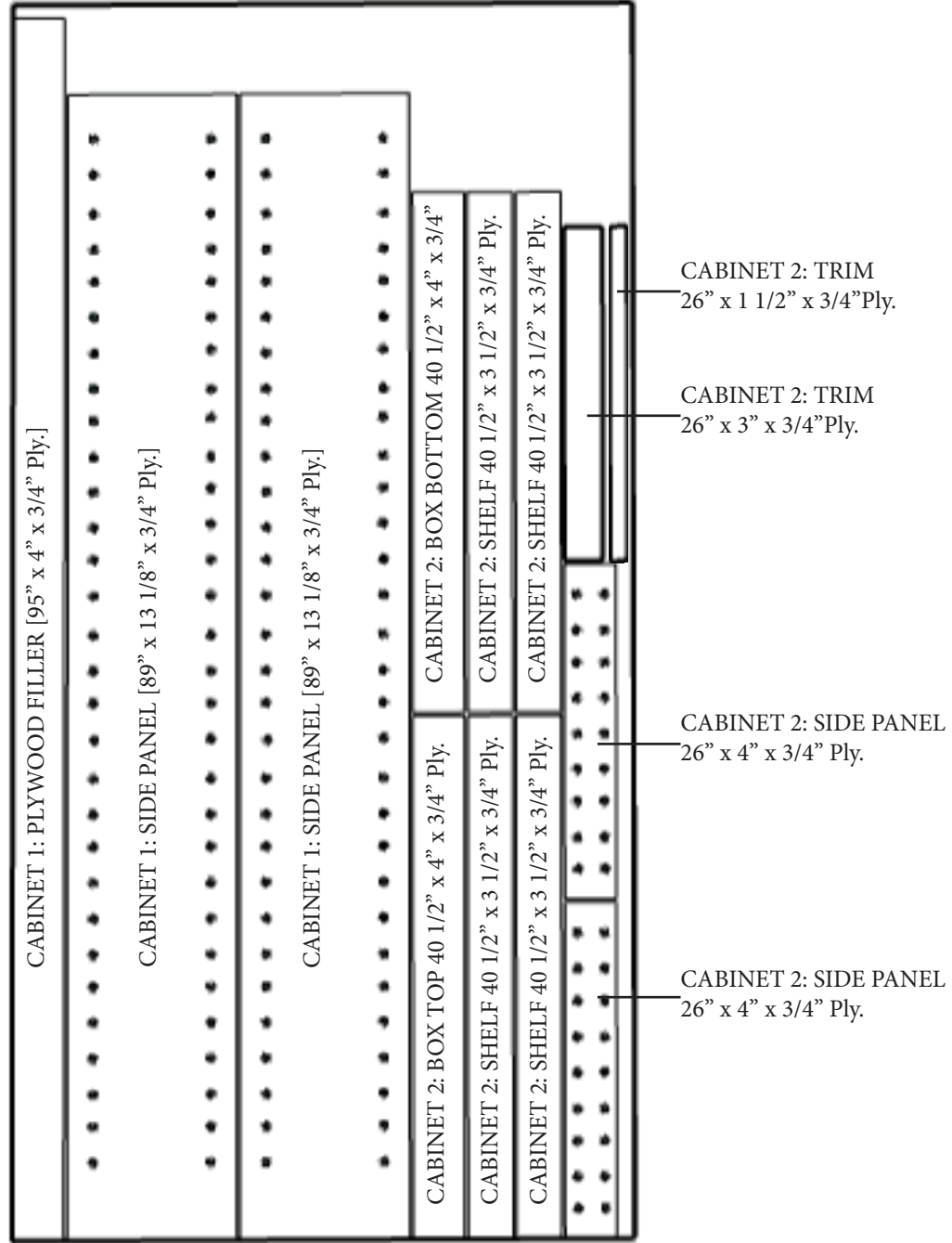
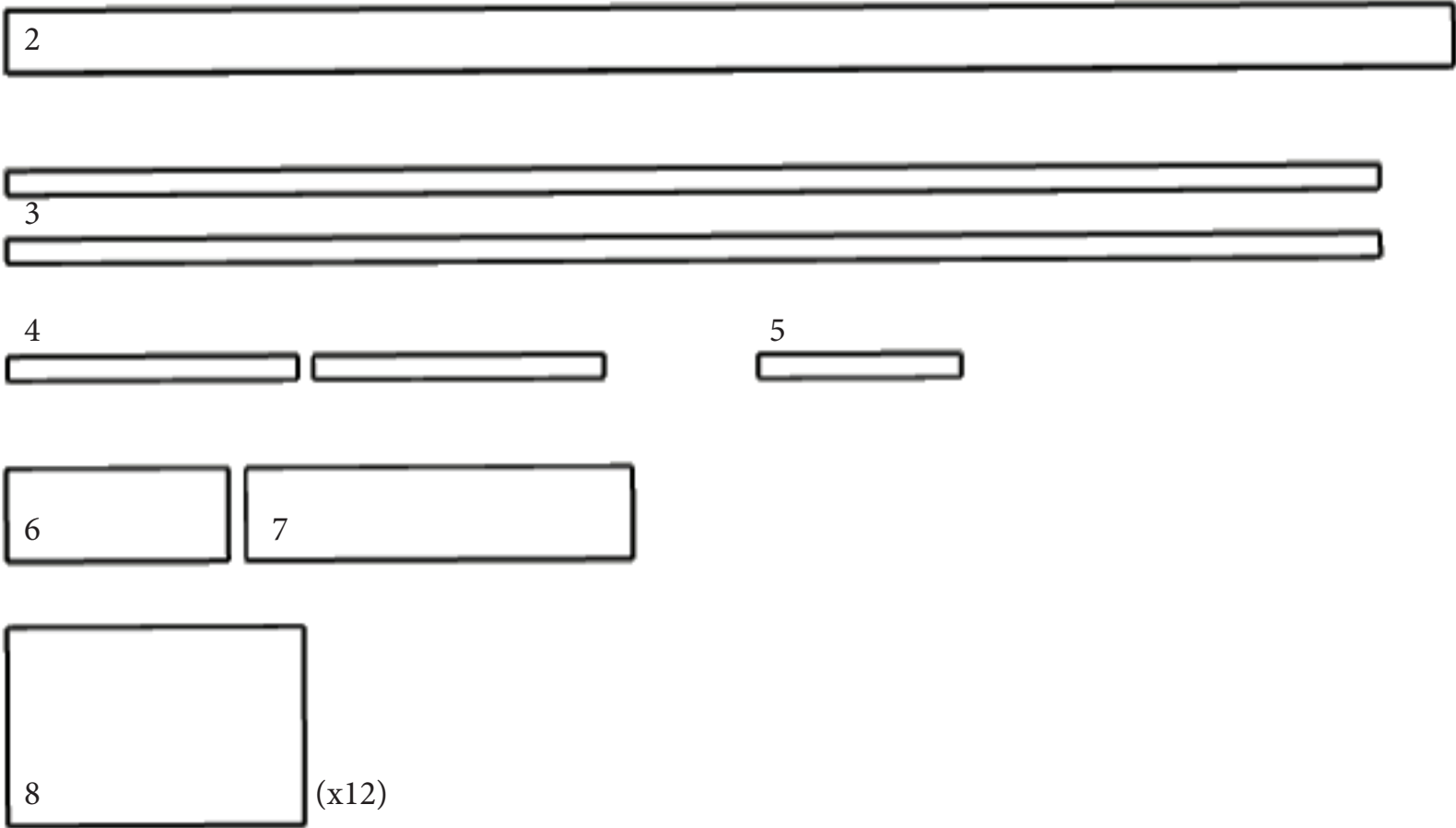
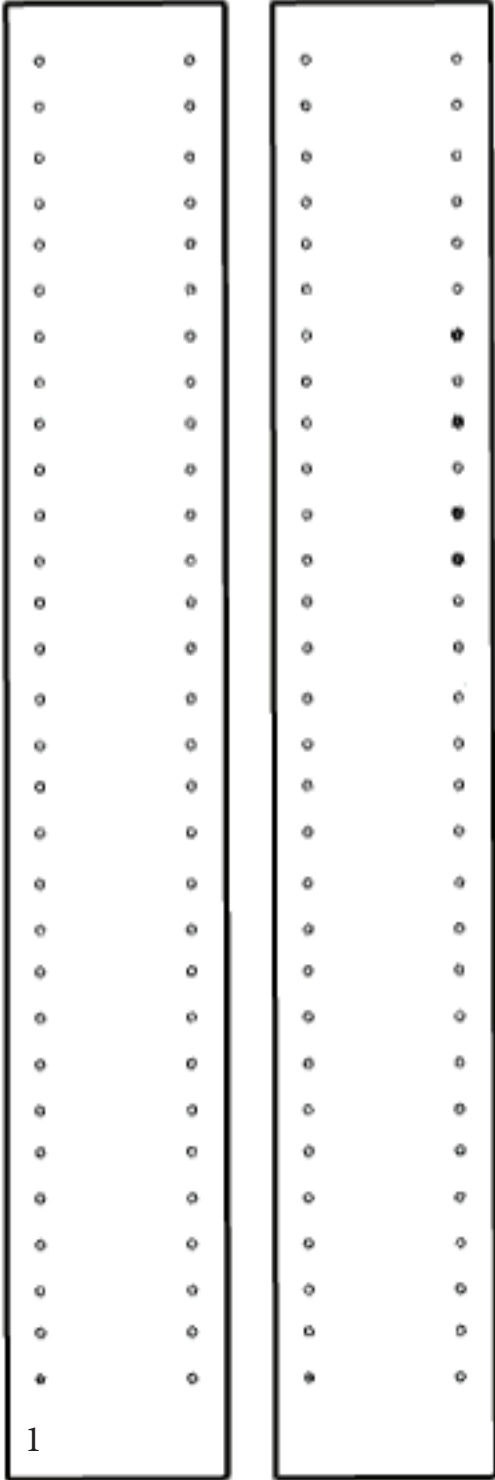


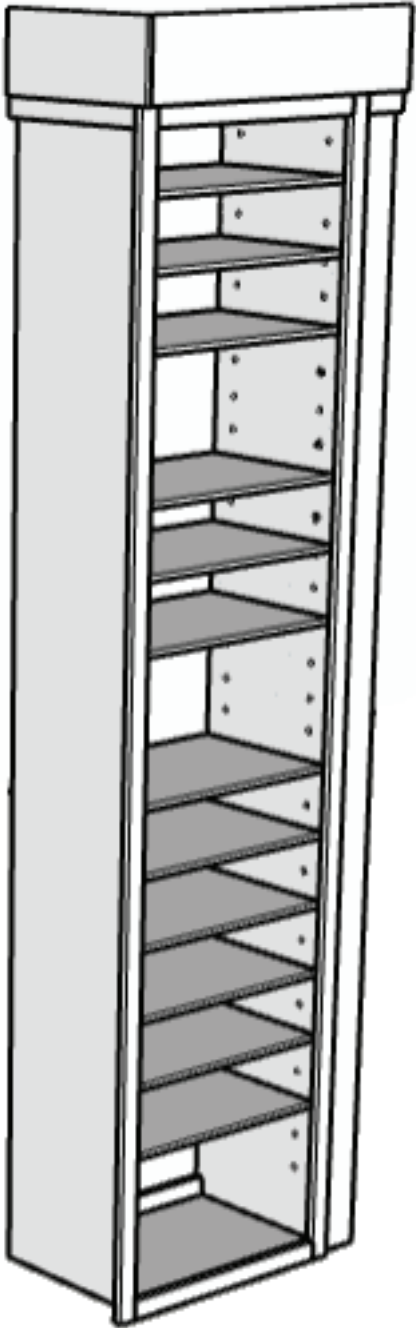
Honey Built Home | Craft Room Cabinet Plywood Cut List



Honey Built Home | Craft Room Cabinet
Cabinet 1

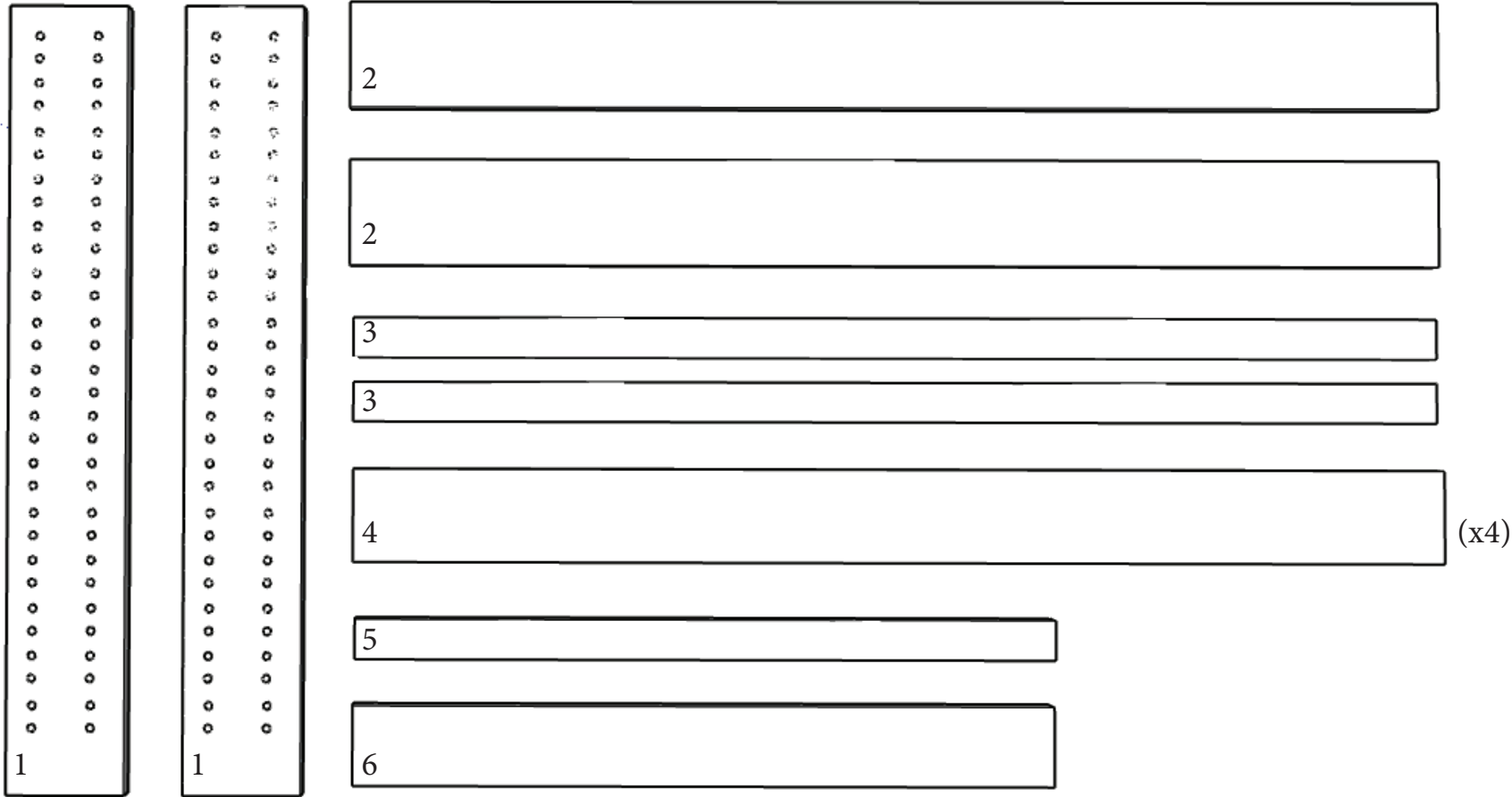


- CABINET 1:
- 1) SIDE PANEL
26" x 4" x 3/4" Ply.
 - 2) PLYWOOD FILLER
95" x 4" x 3/4" Ply.
 - 3) FACE FRAME SIDES
90" x 2" x 1"
 - 4) FACE FRAME TOP/BOTTOM
19" x 2" x 1"
 - 5) CROWN TRIM
13 1/4" x 2" x 1"
 - 6) CROWN
14 1/2" x 6" x 1/2" Ply.
 - 7) CROWN
25 1/4" x 6" x 1/2" Ply.
 - 8) SHELVES
19 3/8" x 12 7/8" x 1/2" Ply.



Honey Built Home | Craft Room Cabinet

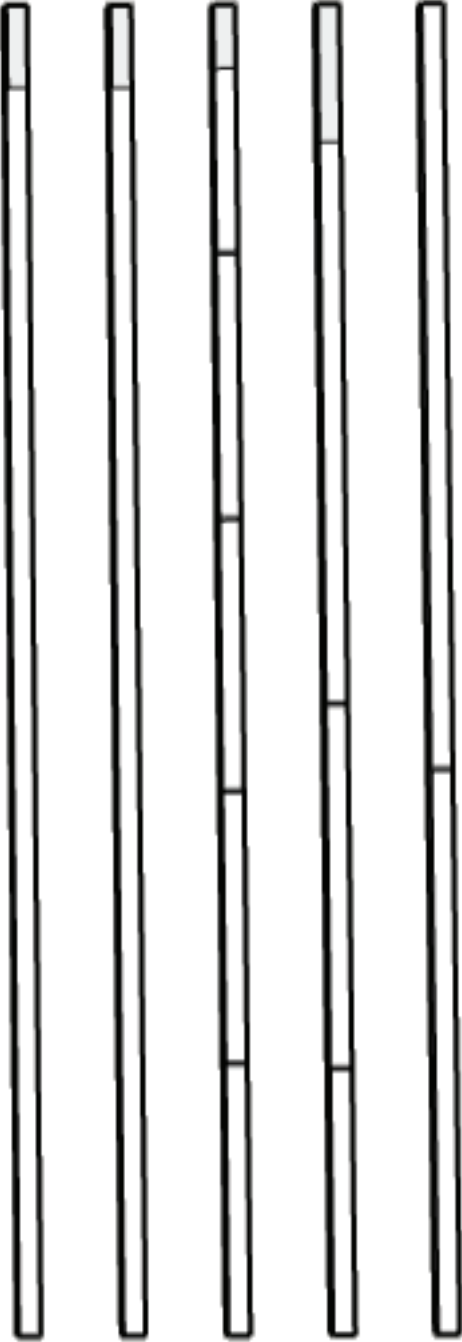
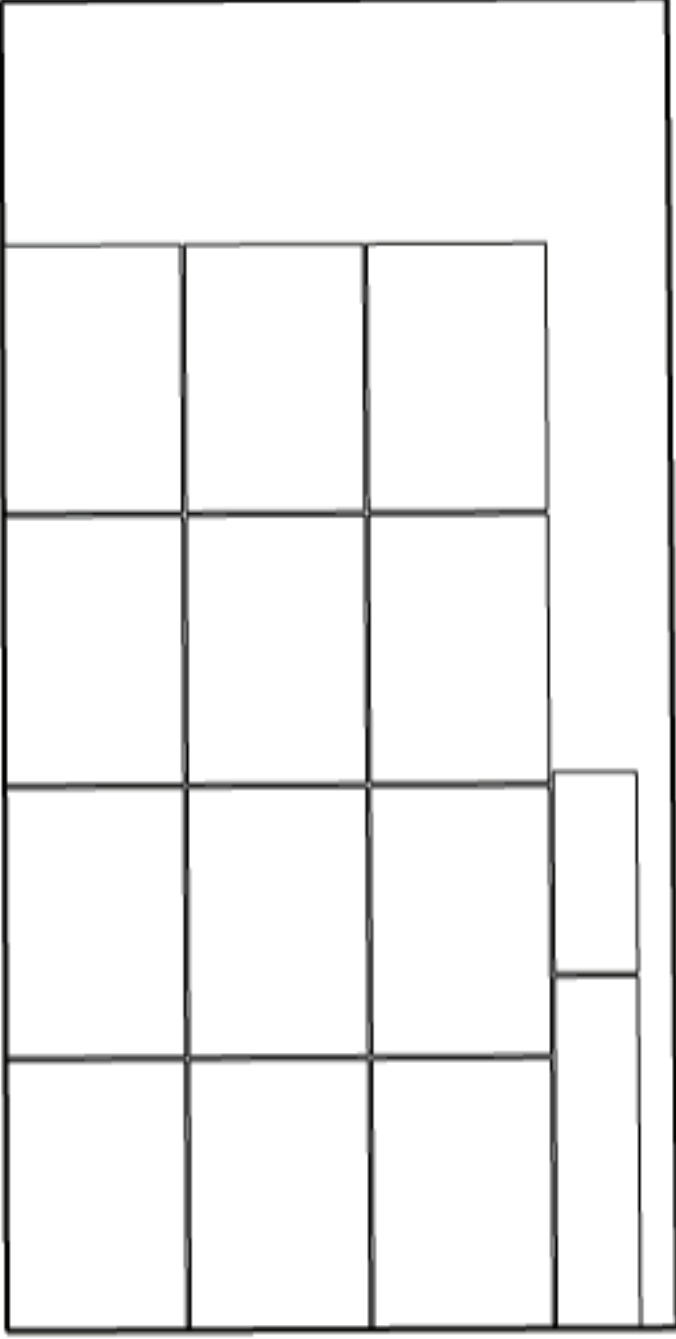
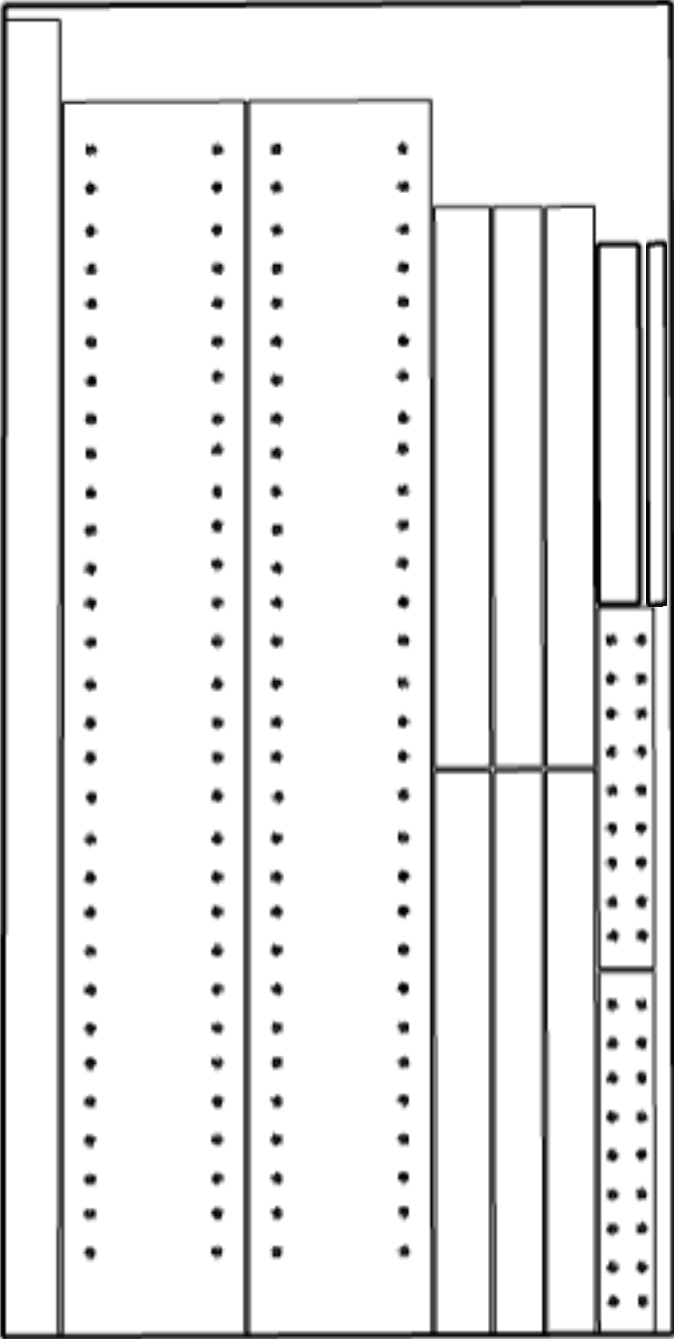
Cabinet 2



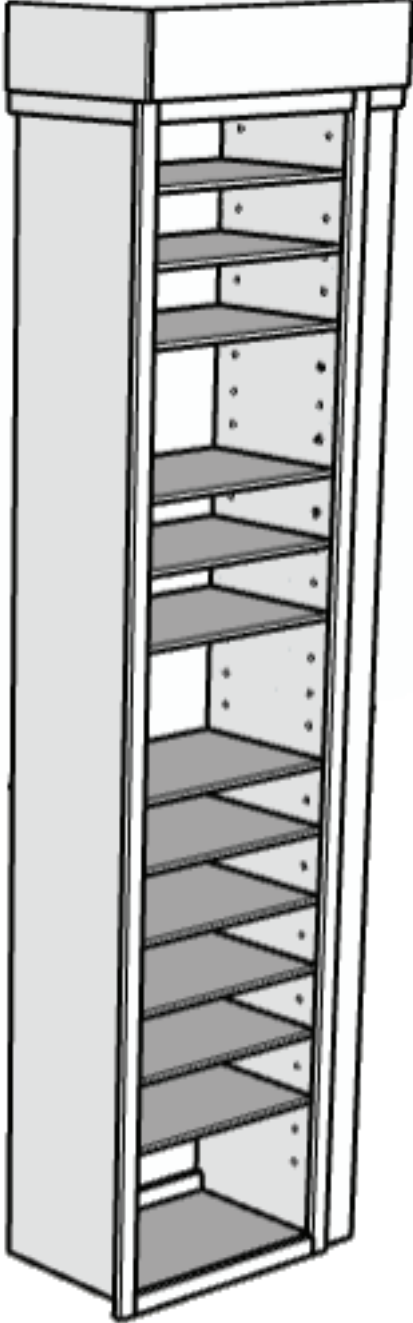
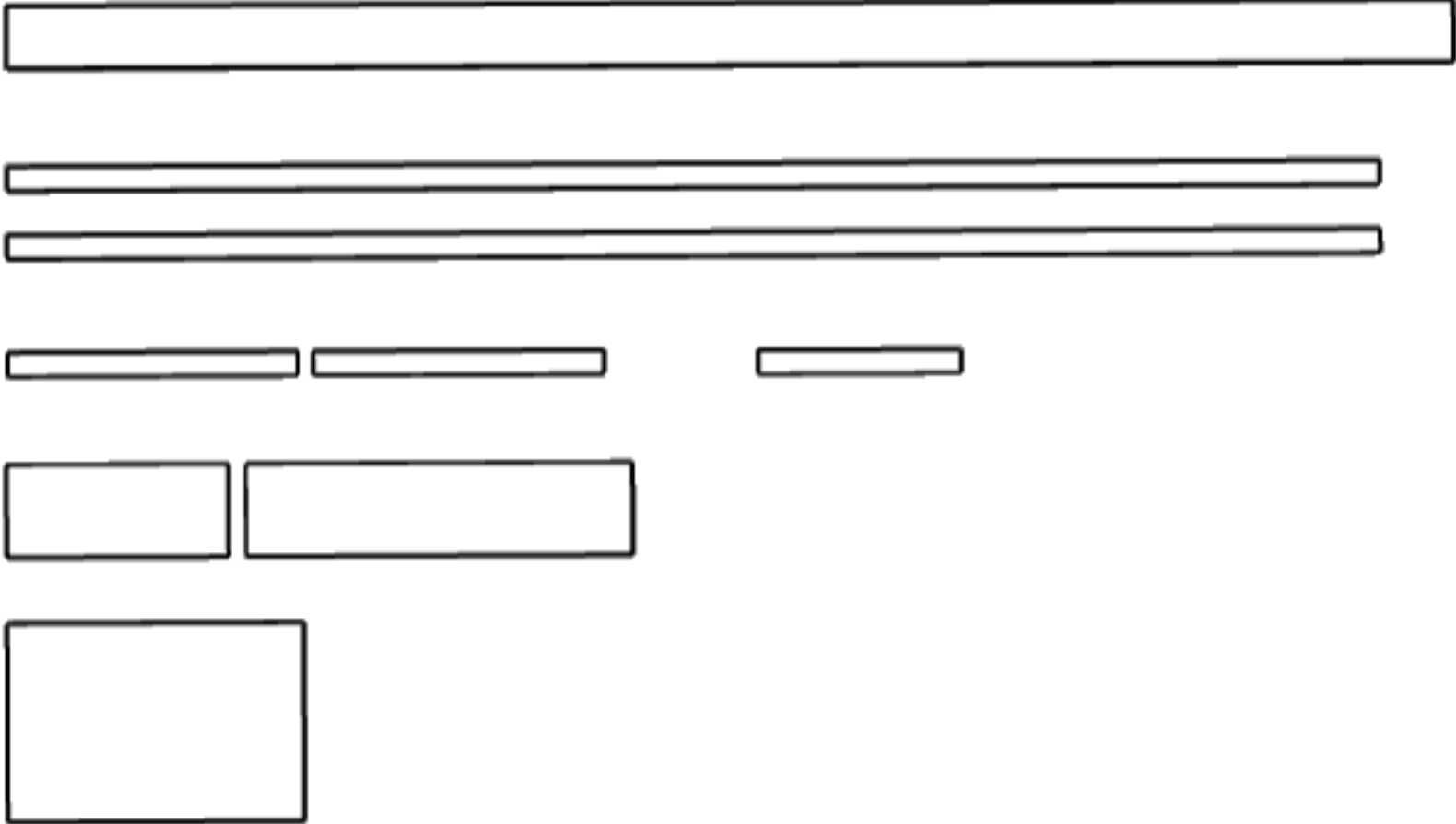
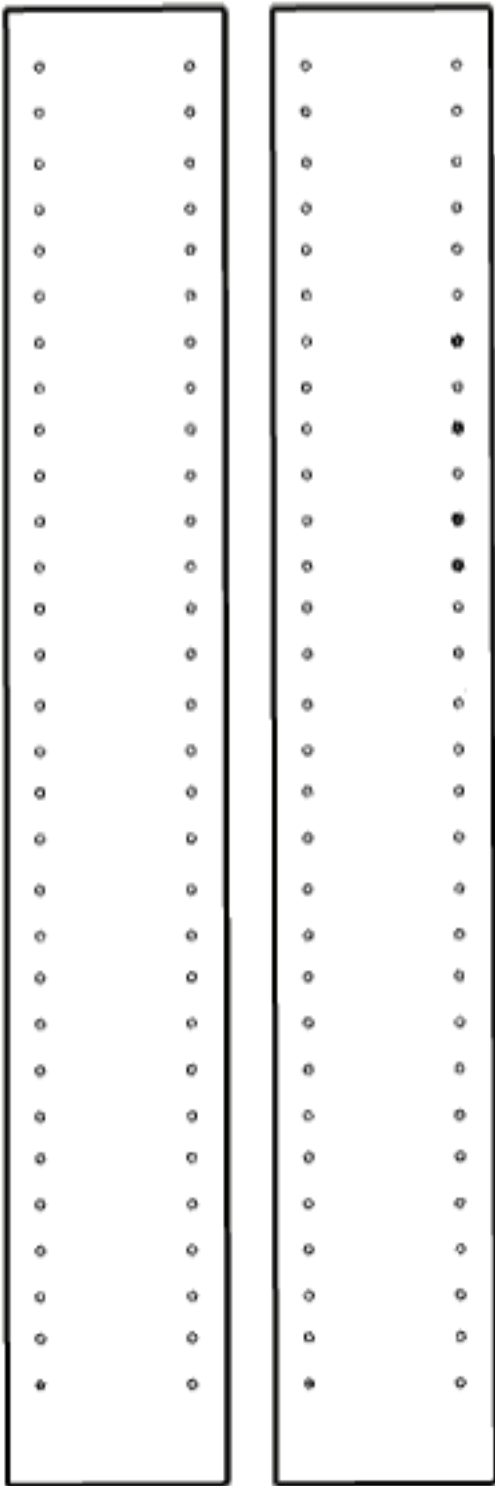
- CABINET 2:
- 1) BOX SIDE PANELS
26" x 4" x 3/4" Ply.
 - 2) BOX TOP/BOTTOM
40 1/2" x 4" x 3/4" Ply.
 - 3) FACE FRAME TOP/BOTTOM
40 1/4" x 2" x 1"
 - 4) SHELVES
40 1/2" x 3 1/2" x 3/4" Ply.
 - 5) FACE FRAME RIGHT SIDE
26" x 2" x 1"
 - 6) FACE FRAME LEFT SIDE
26" x 3" x 1"



Honey Built Home | Craft Room Cabinet
Plywood Cut List



Honey Built Home | Craft Room Cabinet
Cabinet 1



Honey Built Home | Craft Room Cabinet
Cabinet 2

